

# Mission

To reach out to our  
community, sow the seeds  
of education in our young  
children, nourish their  
development socially,  
intellectually, physically,  
emotionally, and grow  
them into vibrant healthy  
contributors to our world.

For more information contact  
our Preschool Teachers:

Ana Martinez

[ana.martinez@sanpasqualunion.net](mailto:ana.martinez@sanpasqualunion.net)

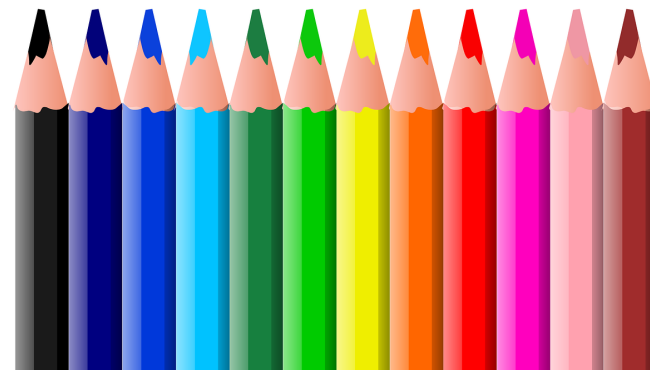
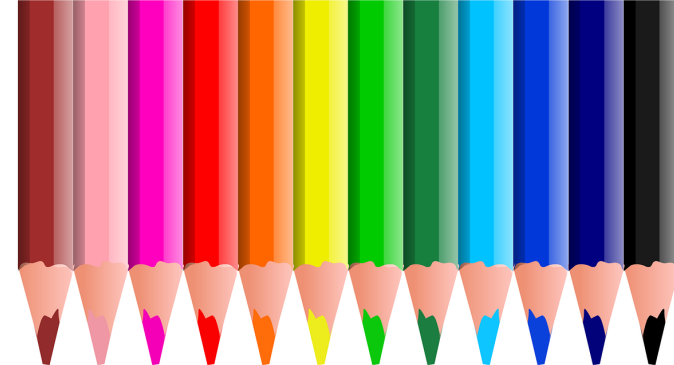
Jeanette Brown

[jeanette.brown@sanpasqual.union.net](mailto:jeanette.brown@sanpasqual.union.net)

15305 Rockwood Road  
Escondido, CA 92027  
(760) 745-4931 x 2200



**San Pasqual**  
Union School District  
*The Little School in the Valley*



# Welcome to San Pasqual Union Preschool

SPU Preschool fulfills the vision of the San Pasqual Union School to provide quality pre-kindergarten education exclusively for the residents of the San Pasqual Union School District. SPU Preschool is not a daycare but an advanced early-start curriculum designed to give your child a head start in kindergarten.

This privately funded and independently operated preschool program is designed to integrate with the SPUSD kindergarten program and beyond.

The classroom is in a convenient location with classes taught by certified teachers and qualified aides.

## Parent Involvement

Involving parents is an essential element in the SPU Preschool program. Parents and guardians are strongly encouraged to participate in the classroom, share their talents and special interests, and take projects home to work on.



## Curriculum

SPU Preschool uses Handwriting Without Tears, Houghton Mifflin Pre-K Language Arts, and a hands on math program. In planning weekly curriculum we focus on the development of the whole child and strive to integrate social, emotional, cognitive, and physical domains through ongoing project work.

## Admission

Admission is limited to children in the San Pasqual Union School District on a first come, first serve basis. When space is available, admission will be open to children outside the district boundaries.

In addition to a completed Registration Packet the following is also required for admission:

- ♦ Proof of residency in the San Pasqual Union School District
- ♦ Proof of date of birth
- ♦ Current immunization records and physical examination
- ♦ Child's doctor information and emergency information
- ♦ Children must be toilet trained
- ♦ \$75 non-refundable registration fee

## Sessions & Monthly Tuition 2021-22 School Year (10 months)

The following options are available:

- ♦ 5 days (M-F) 8:00-12:00 (\$575)
- ♦ 5 days (MTWTF): 8:00-3:00 (TH): 8:00-1:30 (\$700)
- ♦ 3 days (MWF): 8:00-12:00 (\$350)
- ♦ 3 days (MWF): 8:00-3:00 (\$450)
- ♦ 2 days (TTH): 8:00-12:00 (\$240)
- ♦ 2 days (T): 8:00-3:00 (TH): 8:00-1:30 (\$300)